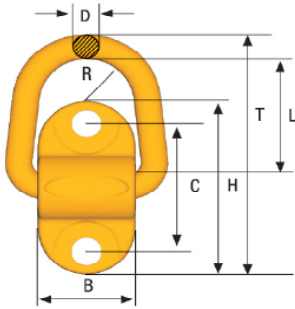


## Screw-on lifting point SLP



Code	WLL tonnes*	B	C	D	H	L	M	T	R	Weight appr. kgs
SLP-1T	1	50	72	14	98	55	M14	139	24	0.8
SLP-3T	3	58	84	17	114	50	M16	144	29	1.3
SLP-5T***	5	64	116	22	160	74	M20	203	33	2.6

\*\*\* Can be supplied with spring for stay up function