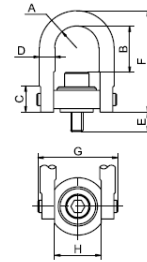




AAI* S/s Hoist ring

304/1.4301

These metric hoist rings can rotate 360° and pivot 180° to absorb any movement from unbalanced loads. Easy to fit, by simply screwing the ring onto the part to be lifted. Use instructions are supplied with each delivery.



Code	WLL	Thread	Dimensions in mm								BF	Weight
			t	mm	A	B	C	D	E	F	G	H
AA0.2 I	0.20	M8x1.25	11	32	18	10	13	68	47	25	1.0	0.17
AA0.25 I	0.25	M10x1.50	11	30	18	10	18	68	47	25	1.2	0.17
AA0.5 I	0.52	M12x1.75	22	60	30	19	19	121	89	51	2.6	1.08
AA0.5 LI	0.52	M12x1.75	22	110	30	19	19	171	89	51	2.6	1.08
AA0.9 I	0.95	M16x2.00	22	56	30	19	29	121	89	51	4.7	1.12
AA0.9 LI	0.95	M16x2.00	22	106	30	19	29	171	89	51	4.7	1.12
AA1 I	1.07	M20x2.50	22	52	30	19	34	121	89	51	5.3	1.19
AA1 LI	1.07	M20x2.50	22	102	30	19	34	171	89	51	5.3	1.19
AA1.5 I	1.50	M20x2.50	36	78	43	25	32	166	131	76	7.5	3.03
AA1.5 LI	1.50	M20x2.50	36	118	43	25	32	206	131	76	7.5	3.03
AA2.1 I	2.10	M24x3.00	36	74	43	25	37	166	131	76	10.5	3.10
AA2.1 LI	2.10	M24x3.00	36	114	43	25	37	206	131	76	10.5	3.10
AA3.5 I	3.50	M30x3.50	45	106	54	32	42	222	165	95	17.5	6.30
AA5.5 LI	5.50	M36x4.00	57	166	71	44	64	317	217	124	27.5	15.50
AA6.25 I	6.25	M42x4.50	57	160	71	44	82	317	217	124	31.2	16.00
AA6.75 I	6.75	M48x5.00	57	154	71	44	82	317	217	124	33.7	16.80
AA11.1 I	11.15	M64x6.00	76	204	103	57	101	428	296	165	55.7	39.00
AA15.7 I	15.75	M72x6.00	95	220	133	70	132	495	359	206	78.7	74.00
AA22.3 I	22.30	M90x6.00	102	235	153	83	177	561	404	218	111.5	118.00

* on request.
Safety factor 5.