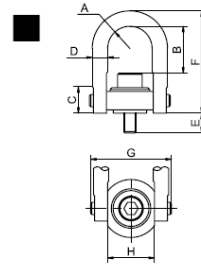




## AAN Hoist ring

These metric hoist rings can rotate 360° and pivot 180° without the need to derate the WLL.  
Easily fitted, by simply screwing the ring onto the part to be lifted.  
Use instructions are supplied with each delivery.



Code	WLL	Thread	Dimensions in mm								BF	Weight
	t		mm	A	B	C	D	E	F	G	H	t
AA0.4N	0.40	M8 x 1.25	11	32	18	10	13	68	47	25	2.0	0.17
AA0.5N	0.50	M10 x 1.50	11	30	18	10	18	68	47	25	2.5	0.17
AA1N	1.05	M12 x 1.75	22	60	30	19	19	121	89	51	5.2	1.08
AA1LN	1.05	M12 x 1.75	22	110	30	19	19	171	89	51	5.2	1.08
AA1.9N	1.90	M16 x 2.00	22	56	30	19	29	121	89	51	9.5	1.12
AA1.9LN	1.90	M16 x 2.00	22	106	30	19	29	171	89	51	9.5	1.12
AA2.1N	2.15	M20 x 2.50	22	52	30	19	34	121	89	51	10.7	1.19
AA2.1LN	2.15	M20 x 2.50	22	102	30	19	34	171	89	51	10.7	1.19
AA3N	3.00	M20 x 2.50	36	78	43	25	32	166	131	76	15.0	3.03
AA3LN	3.00	M20 x 2.50	36	118	43	25	32	206	131	76	15.0	3.03
AA4.2N	4.20	M24 x 3.00	36	74	43	25	37	166	131	76	21.0	3.10
AA4.2LN	4.20	M24 x 3.00	36	114	43	25	37	206	131	76	21.0	3.10
AA7N	7.00	M30 x 3.50	45	106	54	32	42	222	165	95	35.0	6.30
AA11N	11.00	M36 x 4.00	57	166	71	44	64	317	217	124	55.0	15.50
AA12.5N	12.50	M42 x 4.50	57	160	71	44	82	317	217	124	62.5	16.00
AA13.5N	13.50	M48 x 5.00	57	154	71	44	82	317	217	124	67.5	16.80
AA22.3N	22.30	M64 x 6.00	76	204	103	57	101	428	296	165	111.5	39.00
AA31.5N	31.50	M72 x 6.00	95	220	133	70	132	495	359	206	157.5	74.00
AA51N	44.60	M90 x 6.00	102	235	153	83	177	561	404	218	255.0	118.00

On request.  
Safety factor 5.

Nut not supplied