



PASI

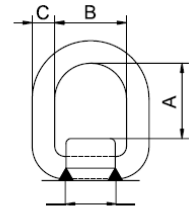
S/s Weld-on transport ring

316 Ti/1.4571

Welding must only be carried out by a qualified welder, in accordance with DIN EN 287-1.

The surfaces to be welded must be clean, without oil, grease or paint...

Welding instructions are supplied with each delivery.



Code	WLL	Dimensions in mm			BF	Weight
		t	A	B		
PAS 0.75 I	0.75	42	40	13	3.0	0.40
PAS 1.25 I	1.25	49	45	18	5.0	0.60
PAS 3.20 I	3.20	57	55	22	12.8	1.20
PAS 5 I	5.00	67	70	26	20.0	2.40