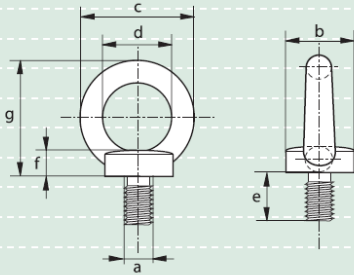


S-8180
E-8180



Green Pin® eye bolts C15E according to DIN 580

- **Material** : carbon steel, C15E
- **Safety factor** : MBL equals 6 x WLL
- **Standard** : DIN 580
- **Finish** : selfcoloured
electro-galvanized
- **Certification** : certificates can be supplied upon request

working load limit	diameter thread	diameter base	diameter eye outside	diameter eye inside	length	thickness base	height	weight per 100 pcs
tons	a mm	b mm	c mm	d mm	e mm	f mm	g mm	kg
0.14	M 8	20	36	20	13	6	36	6
0.23	M 10	25	45	25	17	8	45	10.3
0.34	M 12	30	54	30	20.5	10	53	17.7
0.7	M 16	35	63	35	27	12	62	28
1.2	M 20	40	72	40	30	14	71	42.4
1.8	M 24	50	90	50	36	18	90	83.4
3.2	M 30	65	108	60	45	22	109	166
4.6	M 36	75	126	70	54	26	128	265